

## CHRISTINE RIEDY, MA, PhD, MPH, RECEIVES HRSA FUNDING

Dr. Christine Riedy, chair and Delta Dental of Massachusetts associate professor of Oral Health Policy and Epidemiology, received funding from The Health Resources and Services Administration (HRSA) for “Predoctoral Oral Health Education and Training for an Aging America (POHETAA).”

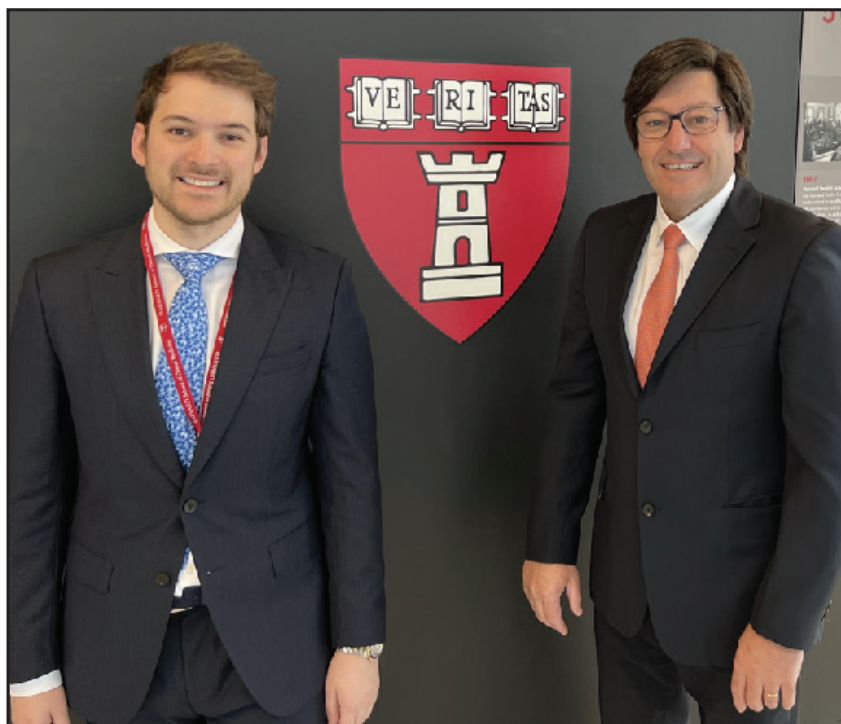
Older adults, 65 years and older, are the most rapidly growing demographic in the United States with 10,000 adults reaching this milestone within a single day. Despite older adults living longer, many have not experienced good health - having two or more chronic health conditions. Inequalities in oral health and the complex relationship between oral health and general health especially among those with multiple chronic conditions requires a comprehensive, interdisciplinary, and patient-centered approach. While the number of older adults in the U.S. is increasing, the number of health professionals who specialize in their care is decreasing. **All oral health providers who care for older adults must not only be open to coordinating with the patient, the patient's family, caregivers, and other professionals, but must have specific training regarding their care.**

The overall goal of this program is to transform the education and training of Harvard School of Dental Medicine's (HSDM) predoctoral dental students by incorporating age-friendly, interprofessional, and social determinants of health principles into their curriculum to better prepare them to care for underserved and vulnerable older adults. We propose to address the gap in dental geriatric education by enhancing the predoctoral dental didactic and emergent clinical experiences as well as creating a geriatric oral health track that will enable predoctoral dental students to build skills and competencies

in several areas including but not limited to; (1) 4 M's Framework (what Matters most, Medication, Mentation, Mobility), (2) interprofessional education and collaborative practice (IPE/IPCP) including integration of oral health and primary care, (3) cultural competence and health literacy and, (4) social determinants of health.

The specific goals are to: (1) Improve and expand predoctoral dental education in the understanding and care delivery of underserved and vulnerable older adults by planning, developing, and implementing didactic and emergent clinical experiences in an enhanced dental curriculum and creating an innovative community-based geriatric oral health track that delivers active learning, didactic strategies, and best practices in older adult oral healthcare; (2) Train predoctoral dental students in innovative comprehensive and patient-centered models of care for underserved and vulnerable older adults including interprofessional collaborative practice, teledentistry and Age-Friendly Health Systems; (3) Create a pipeline to track a diverse pool of predoctoral dental students into postdoctoral general dentistry and dental public health programs with a rural focus as well as geriatric fellowship programs to ensure a skilled workforce to meet Americans' aging oral health needs; and (4) Evaluation, operational and administrative support to achieve sustainability.

# LORENZO TAVELLI, DDS, MS, RECEIVES FUNDING FROM THE OSSEOINTEGRATION FOUNDATION



**Lorenzo Tavelli, DDS, MS, assistant professor of Oral Medicine, Infection and Immunity, received funding from the Osseointegration Foundation.**

Dr. Tavelli's project "Prediposing and Protective Factors for Implant Health Complications and Esthetic Success: A Clinical and Ultrasonographic Study," was selected as the 2022 Translational and Clinical Science Research Grant winner. The objective of the study is to combine the use of novel Power Doppler Ultrasonography to clinical and radiographic parameters for characterizing dental implants and assessing parameters associated with esthetic outcomes, peri-implant health, and complications. Dr. Tavelli is working with Dr. German Gallucci, Raymond J. and Elva Pomfret Nagle associate professor and chair of Restorative Dentistry and Biomaterials Sciences.



**Jin Hao, MS, DMD, PhD, successfully defended his PhD dissertation "TBK1 deficiency Leads to TDP-43 Pathology Driven by Endo-Lysosomal Dysfunction in Human-Induced Motor Neurons" for the Biological Sciences in Dental Medicine PhD Program.**

Dr. Hao is photographed above in Harvard's Memorial Hall with Dr. Yingzi Yang, professor of Developmental Biology and associate dean for research at HSDM.

# PETER POLVERINI, DDS, DMSc, SELECTED AS THE NEXT GOLDHABER AWARD RECIPIENT



**Peter Polverini, DDS, DMSc, Jonathan Taft Distinguished University Professor of Dentistry, Professor of Dentistry, Department of Oral Medicine/Pathology and Oncology, School of Dentistry and Professor of Pathology at the University of Michigan was selected as the next Goldhaber Award recipient.**

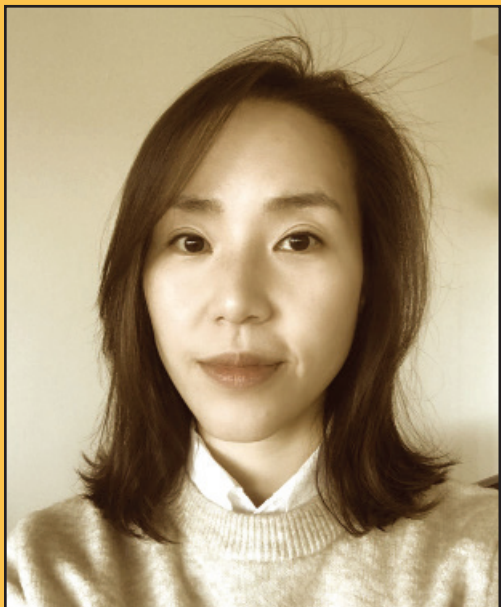
Dr. Polverini has a distinguished scientific career in the field of vascular biology, has served multiple important leadership roles. Dr. Polverini is an HSDM alumnus, fellow of the American Association for the Advancement of Sciences and was elected to the Institute of Medicine of the National Academies in 2010, and president of AADR in 2013. We look forward to celebrating Dr. Polverini on November 14, 2022.

## GOLDHABER AWARD RECIPIENTS 1990-2022

1990	Eiko Sairenji
1991	Joseph Henry
1992	Jens Jørgen Pindborg
1994	Harold Loe
1995	Ronald Gibbons
1996	Jeanne Sinkord
1997	Robert Gorlin
1998	Robert Ledley
1999	Harold Slavkin
2000	Gideon Rodan
2001	John Greene
2002	Marjorie Jeffcoat
2003	Charles Bertolami
2004	Sigmund Socransky
2005	Walter Cohen
2006	George Zarb
2007	Robert Genco
2008	Lawrence Tabak
2009	Per-Ingvar Brånemark
2010	Irma Thesleff
2011	Martha Somerman
2012	John Greenspan
2013	Ray Williams
2015	Teruko Takano Yamamoto
2016	Laurie McCauley
2017	Anne Marie Kuijpers-Jagtman
2018	Paul Sharpe
2021	Ichiro Nishimura
2022	Peter Polverini

No Goldhaber Award recipient was chosen in 1993, 2014, 2019, 2020.





## SUNG EUN CHOI, MS, PHD, RECEIVES SHORE PROGRAM FACULTY DEVELOPMENT AWARD

Dr. Sung Eun Choi, instructor in the Department of Oral Health Policy and Epidemiology, received the 2022 Eleanor and Miles Shore Faculty Development Award in honor of Aina M. Auskaps, DMD.



The Eleanor and Miles Shore Faculty Development Awards Program (Shore Program) strives to support the Faculty of Medicine at the level of instructor and assistant professor by administering a range of award opportunities to support academic activities for vulnerable faculty balancing early careers with significant personal responsibilities. For her award, Dr. Choi will focus on “Predicting Frequent Emergency Department Visits for Dental-Related Conditions.” Reliance on the emergency department (ED) for receiving dental care continues to rise and health care reformers and policy makers have turned to ED utilization as a potential source for cost savings. The objective of this project is to identify patients at high-risk of frequent ED visits for dental-related conditions using different machine-

learning approaches. Dr. Choi stated, **“this faculty development award will allow me to conduct a research project that aims to reduce oral health disparities in the US. I hope the results of this study will inform policy makers to better target care management and policy interventions that will address unmet care and social needs while reducing ED overutilization.”** Dr. Choi joined HSDM from Stanford University, where she received a PhD in management science and engineering. She also earned her masters of science in biostatistics from Harvard University. Dr. Choi’s research interests lie in using mathematical models to assess the health and economic outcomes of various health policy and healthcare decisions under uncertainty. Her methodological interests include integrating data science and operations research methods to inform health decision-making. She is also funded by a K99 award from the NIH/National Institute on Minority Health and Health Disparities for “Reducing Oral Health Disparities in Children Using Predictive Analytics and Mathematical Modeling.”

Dr. Auskaps was the first woman to graduate from the Harvard School of Dental Medicine in 1955, having already earned a medical degree (specializing in dentistry) in her native Latvia in 1944, as well as a dental degree completed in Germany in 1945. She spoke five languages fluently including Russian which she learned from her mother. After surviving terrible hardships during World War II, she and her mother were able to emigrate to the United States. She originally worked as a medical translator at Yale University and soon became a research fellow and eventually faculty member. In 1955, she completed her Harvard dental degree and joined the faculty of the Department of Biochemistry and Nutrition. Later in her career, Dr. Auskaps began a private dental practice out of her home in Jamaica Plain, Massachusetts which lasted 50 years.

# PUBLICATIONS

## DEVELOPMENTAL BIOLOGY

Bell N, Bhagat S, Muruganandan S, Kim R, Ho K, Pierce R, Kozhemyakina E, Lassar A, Gamer L, Rosen V, Ionescu A. Overexpression of transcription factor FoxA2 in the developing skeleton causes an enlargement of the cartilage hypertrophic zone, but it does not trigger ectopic differentiation in immature chondrocytes. *Bone* 2022; 116418.

Kantaputra P, Jatooratthawichot P, Tantachamroon O, Nanekrunsan K, Intachai W, Olsen B, Tongsim S, Ngamphiw C, Cairns J. Novel dental anomaly-associated mutations in WNT10A protein binding sites. *International Dental Journal* 2022; May 7.

Li X, Zhuo S, Zhuang T, Cho Y, Wu G, Liu Y, Mu K, Zhang K, Su P, Yang Y, Zhang C, Zhu J, Jiang J. YAP inhibits ER $\alpha$  and ER $\beta$  breast cancer growth by disrupting a TEAD-ER $\alpha$  signaling axis. *Nature Communication* 2022;13(1):3075.

Liu Y, Zhuo S, Zhou Y, Ma L, Sun Z, Wu X, Wang X, Gao B, Yang Y. Yap-Sox9 signaling determines hepatocyte plasticity and lineage-specific hepatocarcinogenesis. *Journal of Hepatology* 2022;76(3):652-664.

Maridas D, Gamer L, Moore E, Doedens A, Yu Y, Ionescu A, Revollo L, Whitman M, Rosen V. Loss of Vlk in Prx1+ cells delays the initial steps of endochondral bone formation and fracture repair in the limb. *Journal of Bone and Mineral Research* 2022;37(4):764-775.

Maruyama T, Yu H, Hsu W. Skeletal stem cell isolation from cranial suture mesenchyme and maintenance of stemness in culture. *Bio-protocol* 2022;12(5):e4339.

Muruganandan S, Pierce R, Teguh D, Perez R, Bell N, Nguyen B, Hohl K, Snyder B, Grinstaff M, Alberico H, Woods D, Kong Y, Sima C, Bhagat S, Ho K, Rosen V, Gamer L, Ionescu A. A FoxA2+ long-term stem cell population is necessary for growth plate cartilage regeneration after injury. *Nature Communication* 2022;13(1):2515.

## ORAL MEDICINE, INFECTION AND IMMUNITY

Alabdulaaly L, Sroussi H, Epstein J. New onset and exacerbation of oral lichenoid mucositis following SARS-CoV-2 infection or vaccination. *Oral Diseases* 2022; May 20.

Alvarez C, Abdalla H, Suliman S, Rojas P, Wu Y, Almarhoumi R, Huang R, Galindo M, Vernal R, Kantarci A. Corrigendum: RvE1 impacts the gingival inflammatory infiltrate by inhibiting the T Cell response in experimental periodontitis *Frontiers in Immunology* 2022;13:936102.

Barootchi S, Giannobile W, Tavelli L. PDGF-BB-enriched collagen matrix to treat multiple gingival recessions with the tunneled coronally advanced flap. *Clinical Advances in Periodontics* 2022; Jun 4.

Barootchi S, Tavelli L, Di Gianfilippo R, Shedden K, Oh T, Rasperini G, Neiva R, Giannobile W, Wang H. Soft tissue phenotype modification predicts gingival margin long-term (10-year) stability: Longitudinal analysis of six randomized clinical trials. *Journal of Clinical Periodontology* 2022; May 13.

Brennan M, Treister N, Sollecito T, Schmidt B, Patton L, Lin A, Elting L, Helgeson E, Lalla R. Dental caries postradiotherapy in head and neck cancer. *JDR Clinical Translational Research* 2022; Apr 11.

Brune A, Song Y, Oren A, Paster B. A new family for 'termite gut treponemes': description of *Breznakiellaceae* fam. nov., *Gracilinema caldarium* gen. nov., comb. nov., *Leadbettera azotonutricia* gen. nov., comb. nov., *Helmutkoenigia isoptericolens* gen. nov., comb. nov., and *Zuelzera stenostrepta* gen. nov., comb. nov., and proposal of *Rectinemataceae* fam. nov. *International Journal of Systematic and Evolutionary Microbiology* 2022;72(5).

Goh C, Bohn B, Marotz C, Molinsky R, Roy S, Paster B, Chen C, Rosenbaum M, Yuzefpolskaya M, Colombo P, Desvarieux M, Papapanou P, Jacobs D, Knight R, Demmer R. Nitrite generating and depleting capacity of the oral microbiome and cardiometabolic risk: Results from ORIGINS. *Journal of the American Heart Association* 2022; e023038.

Harris J, Ottaviani G, Treister N, Hanna G. An overview of clinical oncology and impact on oral health. *Frontiers in Oral Health* 2022;3:874332.

Hu Z, Qiu W, Yu Y, Wu X, Fang F, Zhu X, Xu X, Tu Q, Van Dyke T, Morgan E, Chen J. Identification and characterization of a novel long noncoding RNA that regulates osteogenesis in diet-induced obesity mice. *Frontiers in Cell and Developmental Biology* 2022;10:832460.

Johnson L, Oh U, Rothen M, Sroussi H, Dean D, Lloid C, Cintron K, Lee S, Cutler C, Treister N. A review of oral chronic graft-versus-host disease: Considerations for dental hygiene practice. *Journal of Dental Hygiene* 2022;96(2):6-17.

Le S, He X, Tong Y. Editorial: Phage biology and phage therapy. *Frontiers in Microbiology* 2022;13:891848.

Majzoub J, Tavelli L, Barootchi S, Salami A, Inglehart M, Kripfgans O, Chan H. Agreement in measurements of ultrasonography-derived periodontal diagnostic parameters among multiple raters: A diagnostic accuracy study. *Oral Surgery, Oral Medicine, Oral Pathology, Oral Radiology* 2022; S2212-4403(22)00887-2.

Marotz C, Molinsky R, Martino C, Bohn B, Roy S, Rosenbaum M, Desvarieux M, Yuzefpolskaya M, Paster B, Jacobs D, Colombo P, Papapanou P, Knight R, Demmer R. Early microbial markers of periodontal and cardiometabolic diseases in ORIGINS. *NPJ Biofilms Microbiomes* 2022;8(1):30.

Panezai J, Van Dyke T. Resolution of inflammation: Intervention strategies and future applications. *Toxicology and Applied Pharmacology* 2022;116089.

Park J, Song Y, Ko K, Strauss F, Thoma D, Lee J. Effect of collagen membrane fixation on ridge volume stability and new bone formation following guided bone regeneration. *Journal of Clinical Periodontology* 2022; May 30.

Rakian A, Rakian R, Shay A, Serhan C, Van Dyke T. Periodontal stem cells synthesize maresin conjugate in tissue regeneration 3. *Journal of Dental Research* 2022; Apr 15.

Roberts H, Yonel Z, Kantarci A, Grant M, Chapple I. Impact of gingivitis on circulating neutrophil reactivity and gingival crevicular fluid inflammatory proteins. *International Journal of Environmental Research and Public Health* 2022;19(10):6339.

Sandhu S, Klein B, Al-Hadlaq M, Chirravur P, Bajonaid A, Xu Y, Intini R, Hussein M, Vacharotayangul P, Sroussi H, Treister N, Sonis S. Oral lichen planus: Comparative efficacy and treatment costs-a systematic review. *BMC Oral Health* 2022;22(1):161.

Wu D, Jeffreys N, Diba M, Mooney D. Viscoelastic biomaterials for tissue regeneration. *Tissue Engineering Part C: Methods* 2022; Apr 20.

## ORAL AND MAXILLOFACIAL SURGERY

Bavarian R, Pharr C, Handa S, Shaefer J, Keith D. The utility of telemedicine in orofacial pain: Guidelines for examination and a retrospective review at a hospital-based practice. *Journal of Oral Rehabilitation* 2022; May 2.

Bousquet B, Green M, Caillouette C, Simon J, Padwa B, Resnick C. How much opioid medication do patients need after orthognathic surgery? *Journal of Oral and Maxillofacial Surgery* 2022; Apr 7.

Desai A, Faquin W, Iafrate A, Rivera M, Jaquinet A, Troulis M. Clear cell carcinoma: A comprehensive literature review of 254 cases. *International Journal of Oral and Maxillofacial Surgery* 2022;51(6):705-712.

Green M, Resnick C, Mercuri L. Characteristics of medical malpractice claims involving temporomandibular joint surgery in the United States. *Journal of Oral and Maxillofacial Surgery* 2022; Apr 14.

Guntaka P, Harris J, Niedziela C, Bass M, Afshar S. The landscape of international oral and maxillofacial surgery collaborations from 1996 to 2020: A scoping review of the published literature. *International Journal of Oral and Maxillofacial Surgery* 2022; May 11.

He P, Francois K, Missaghian N, Le A, Flynn T, Shanti R. Are bacteria just bystanders in the pathogenesis of inflammatory jaw conditions? *Journal of Oral and Maxillofacial Surgery* 2022; Mar 19.

Hunter W, Harris J, Lee C, Cheng A, Peacock Z. Females have worse overall and disease-specific survival in human papillomavirus-negative oropharyngeal squamous cell carcinoma. *Journal of Oral and Maxillofacial Surgery* 2022; Mar 28.

Kaban L, Dodson T. Regarding "Denosumab for the management of central giant cell granuloma of the jaws-A case series." *International Journal of Oral and Maxillofacial Surgery* 2022;51(6):844-845.

Kantar R, Esenlik E, Al Abyad O, Melhem A, Younan R, Haddad M, Keith K, Kassam S, Annan B, Vijayakumar C, Picard A, Padwa B, Sommerlad B, Raposo-Amaral C, Forrest C, Gillett D, Steinbacher D, Runyan C, Tanikawa D, Chong D, Fisher D, Mark H, Canter H, Losee J, Patel K, Hartzell L, Johnson A, Collares M, Alonso N, Chen P, Tse R, Mann R, Prada-Madrid J, Kobayashi S, Hussain S, Kummer A, Sell D, Pereira V, Mabry K, Gonsoulin C, Persson M, Davies G, Sethna N, Munoz-Pareja J, Kuijpers-Jagtman A, Grayson B, Grollemund B, Garib D, Meazzini M, Kharbanda O, Santiago P, Nalabothu P, Batra P, Stieber E, Prasad D, Brewster H, Ayala R, Erbay E, Akcam M, Don Griot J, Vyas R, Flores R, Breugem C, Hamdan U. The first hybrid International Educational Comprehensive Cleft Care Workshop. *Cleft Palate-Craniofacial Journal* 2022; May 9.

Ma K, Thota E, Huang J, Wei J, Resnick C. Increased risk of temporomandibular joint disorders and craniofacial deformities in patients with juvenile idiopathic arthritis: A population-based cohort study. *International Journal of Oral and Maxillofacial Surgery* 2022; May 19.

Matheus H, Özdemir S, Guastaldi F. Stem cell-based therapies for temporomandibular joint osteoarthritis and regeneration of cartilage/osteocondral defects: A systematic review of preclinical experiments. *Osteoarthritis Cartilage* 2022; May 18.

Stanbouly D, Stewart S, Harris J, Chuang S. Risk factors associated with infection in patients sustaining dog bites to the face. *Journal of Oral and Maxillofacial Surgery* 2022; Apr 30.

Sweeney K, Handa S, August M, Keith D. Are there identifiable risk factors associated with heterotopic ossification of the temporomandibular joint? *Journal of Oral and Maxillofacial Surgery* 2022; S0278-239.

Wang T, Lee C, Song Z, Hajibandeh J. Surprise billing and two surprises act: Considerations for oral-maxillofacial surgery. *Journal of Oral and Maxillofacial Surgery* 2022; Apr 9.

## ORAL HEALTH POLICY AND EPIDEMIOLOGY

Agaku I, Nkosi L, Agaku Q, Gwar J, Tsafa T. A rapid evaluation of the US Federal tobacco 21 (T21) law and lessons from statewide T21 policies: Findings from population-level surveys. *Preventing Chronic Disease* 2022;19:E29.

Agaku I, Nkosi L, Gwar J, Tsafa T. Gender norms, HIV risk, and attitudes towards pre-exposure prophylaxis and other HIV preventive interventions among South African adolescents. *Pan African Medical Journal* 2022;41:136.

El Asmar M, Lavery A, Vardavas C, Filippidis F. How do Europeans quit using tobacco, e-cigarettes and heated tobacco products? A cross-sectional analysis in 28 European countries. *BMJ Open* 2022 Apr 29;12(4):e059068.

Sahni S, Krupat E, Dragan I. From isolation to cooperation: Academic advancement by collaboration. *Journal of Dental Education* 2022; Apr 21.

## RESTORATIVE DENTISTRY AND BIOMATERIALS SCIENCES

Albeshir E, Alsaifi R, Alblawi R, Balhaddad A, Mitwalli H, Oates T, Hack G, Sun J, Weir M, Xu H. Low-shrinkage resin matrices in restorative dentistry-narrative review. *Materials (Basel)* 2022; 18;15(8).

Dong L, Wang M, Gao X, Zheng X, Zhang Y, Sun L, Zhao N, Ding C, Ma Z, Wang Y. miR-9-5p promotes myogenic differentiation via the Dlx3/Myf5 axis. *PeerJ* 2022;10:e13360.

Hamilton A, Griseto N, Negreiros W, Gallucci G. Digital articulation of a complete arch fixed implant prosthesis using the implant prosthetic connections: A dental technique. *Journal of Prosthetic Dentistry* 2022; Apr 14.

Jelicich A, Scialabba R, Lee S. Positional trueness of abutments by using a digital die-merging protocol compared with complete arch direct digital scans and conventional dental impressions. *Journal of Prosthetic Dentistry* 2022; Apr 13.

Kornmehl D, Aldosari M, Tabassian L, Park S, Ohyama H. Association of admissions factors with student performance in preclinical operative dentistry. *Journal of Dental Education* 2022; May 9.

Zheng X, Zhang J, Li S, Gao X, Zhang Y, Wang M, Dong L, Sun L, Zhao N, Ma Z, Ding C, Wang Y. Low doses of niclosamide and quinacrine combination yields synergistic effect in melanoma via activating autophagy-mediated p53-dependent apoptosis. *Translational Oncology* 2022;21:101425.

## MULTI DEPARTMENTAL

Ishida Y, Kuwajima Y, Kobayashi T, Yonezawa Y, Asack D, Nagai M, Kondo H, Ishikawa-Nagai S, Da Silva J, Lee S. Current implementation of digital dentistry for removable prosthodontics in US dental schools. *International Journal of Dentistry* 2022;7331185.

Moore E, Michot B, Erdogan O, Ba A, Gibbs J, Yang Y. CGRP and Shh mediate the dental pulp cell response to neuron stimulation. *Journal of Dental Research* 2022; Apr 11.



# AGE STUDENT AWARD



Joud Omari, DDS, DMSc'24 advanced graduate student in Oral and Maxillofacial Pathology, was selected for the Waldron Award for best scientific poster at the American Academy of Oral and Maxillofacial Pathology annual meeting.

Dr. Omari was

selected for her project, "Erdhiem-Chester Disease: A Case Report" completed under the mentorship of Dr. Sook-Bin Woo and Dr. Reshma Menon.

# RESEARCH PERSONNEL



Guoyan Liang, MD, is a visiting postdoctoral research fellow in the Department of Developmental Biology in the Yang Lab.

Dr. Liang is an attending surgeon in the Spine Department of the Guangdong Provincial People's

Hospital in China. He received his medical degree in 2014 from Sun Yat-sen University where he was chief resident. In the Yang Lab, Dr. Liang will work on understanding the cellular mechanism and signaling pathways underlying injury repair of intervertebral disc.



Chance Bowman is a summer intern in the Yang Lab at the Department of Developmental Biology.

Mr. Bowman is an undergraduate student at Dartmouth College concentrating on biological chemistry

with an anticipated graduation date of 2023. Mr. Bowman is working with Dr. Qian Cong, postdoctoral research fellow in the Yang Lab studying the alteration of normal cell-cell communication in causing heterotopic ossification.



**HARVARD**  
School of Dental Medicine

## A PUBLICATION OF THE OFFICE OF RESEARCH

**Yingzi Yang, PhD**

*Professor of Developmental Biology, Associate Dean for Research*

**Dawn M. DeCosta**

*Editor, Design and Layout*

**Heather M. Denny**

*Editing*

**Kathleen Refior**

*Editing*

**Lia Sgourakes**

*Editing*

## QUESTIONS/SUGGESTIONS?

Please contact Dr. Yang @ [yingzi\\_yang@hsdm.harvard.edu](mailto:yingzi_yang@hsdm.harvard.edu)

# DMD HONORS IN RESEARCH



**Nicole Beck, DMD**, received honors in research for her project "Physician Knowledge and Attitudes Towards Screening and Referral for Obstructive Sleep Apnea: A Mixed Methods Study in a Tertiary Care Hospital" with mentor, Dr. Salim Afshar.



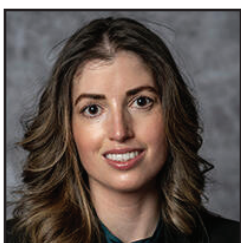
**Praveen Kumar Guntaka, DMD**, received honors in research for his project "The Landscape of International Oral and Maxillofacial Surgery Collaborations from 1996-2020: A Scoping Review of Published Literature" with mentor, Dr. Salim Afshar.



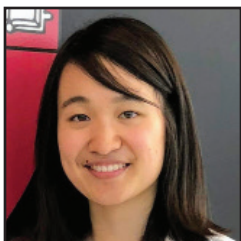
**Jack Harris, DMD**, received honors in research for his project "Early Weight Gain in Infants with Robin Sequence" with mentor, Dr. Cory Resnick.



**Camile Herzog, DMD**, received honors in research for her project "Tooth Pain Adjacent to an Extraction Site as a Novel Risk Factor for Alveolar Osteitis: A Retrospective Analysis" with mentor, Dr. Elsbeth Kalenderian.



**Elizabeth Perry, DMD, PhD**, received honors in research for her project "Tetracyclines Promote Survival and Fitness in Mitochondrial Disease Models" with mentor, Dr. Pere Puigserver.



**Natalie Wen, DMD**, received honors in research for her project "Incidence of Oral Adverse Events in 4683 Patients Receiving Immune Checkpoint Inhibitor Therapy at Massachusetts General Hospital, Brigham and Women's Hospital, and Dana-Farber Cancer Institute" with mentors, Dr. Stephen Sonis and Dr. Alessandro Villa.

PHOTOS BY STEVE GILBERT

## EDITOR'S MESSAGE



In 2001, R. Bruce Donoff, DMD, MD, Walter C. Guralnick Distinguished Professor of Oral and Maxillofacial Surgery and former HSDM Dean, and Bjorn R. Olsen, MD, PhD, professor of Developmental Biology and former HSDM Research Dean, conceived the idea to establish the Research & Education Building and Office of Research at HSDM. At

that time, I joined HSDM from the Brigham and Women's Hospital (BWH) and have been working in the Office of Research ever since. Prior to BWH, I spend time at the Forsyth Institute where I met and worked with Dr. Olsen and many Forsyth colleagues.

**During my tenure, I have had the privilege of publishing 150 *Office of Research Bulletins*; participating in 3 CODA accreditation visits; organizing 20 Student Research Days and Dr. Donald B. Giddon Lectures; and, witnessing more than 950 DMD and AGE students graduate. Most importantly, I have developed extensive relationships with my peers.**

It is with mixed emotions that I announce this will be my last *Office of Research Bulletin* as I bid farewell to HSDM and migrate next door to the Harvard T.H. Chan School of Public Health. Thank you to my brilliant colleagues who have enriched the past 20 years of my life and I hope to see you around campus. In closing, I wish Dr. William Giannobile, dean of HSDM and Dr. Yingzi Yang, associate dean for research, and the entire HSDM community great success in the future.

Respectfully yours,

Dawn M. DeCosta

*Editor, Design & Layout, HSDM Research Bulletin;  
Director of Research Operations, Office of Research*